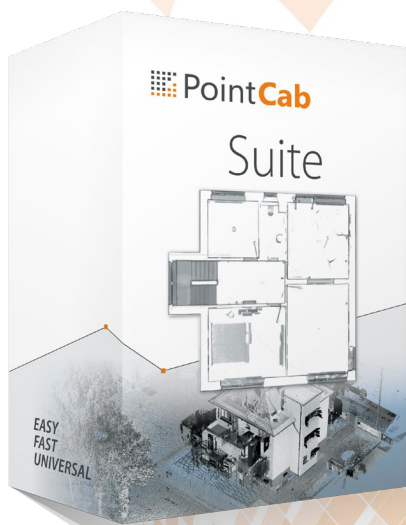


Software for all point clouds

PointCab makes the evaluation of complex and very comprehensive point clouds child's play.

Our software features fast performance and first-time users can learn to use it very quickly thanks to the intuitive operation of the user interface.

The broad interface enables the import of virtually all laser scanner data formats and the evaluated data can be exported into all common CAD systems.

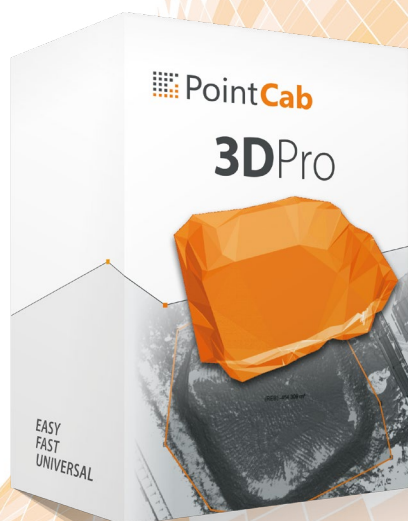


PointCab Suite

PointCab Suite is **the entry-level solution** for the efficient processing of point clouds to create **detailed 2D plans, ground plans and façade views** in next to no time.

The software includes many useful functions for measurements, a practical web export, and alignment tools.

The modular structure of the software means it can be adapted as required to your specific needs.



PointCab 3DPro

PointCab 3DPro provides you with a full range of functions to generate 2D plans and 3D models from large, complex point clouds.

The available functions mean it has never been easier to extract the essential information from point clouds. Whether you need 2D or 3D functionality, PointCab 3DPro accelerates your workflow.

The integrated 4CAD interface connects directly to your CAD system and **simplifies the generation of a BIM model** (available for Revit & ARCHICAD).

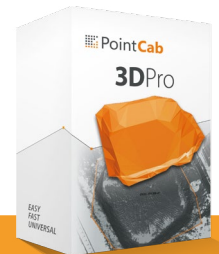
With the **integrated registration tool**, you merge scans from terrestrial laser scanners, from hand-held scanners or from drones in a single project.
















Product overview

Basic software

Software and functions

Depending on the requirements our software packages have different ranges of functions: for entry-level or professional point cloud evaluation.



2D functions			
	Layout & Section	Create distortion-free layouts and sections as ortho photos.	●
	Sketch	Measurements of angles, distances, areas and surfaces.	●
	PhotoMatch	Match high-resolution images onto sections and layouts.	●
	Vectorizer	Vectorize plans based on your point cloud.	○
	Profiler*	Create profile lines in an elevation model of the point cloud.	○
3D functions			
	3D-Points	Extraction of 3D points from sections and planar views.	●
	Volume	Create volume calculation protocols according to REB 22013.	○
	Delta	Analyze and protocol deviations of evenness.	○
	Unfold	Unfold and analyze cylindrical objects.	○
	Mesh	Extract meshed digital 3D terrain models (DTM).	○
	Point Cloud Export	Export specific parts of the point cloud.	○
Documentation			
	Merger	Create scaled images for documentation.	●
	Panorama	Panoramic views from any desired position.	●
	WebExport	Create interactive HTML or PDF documentations.	●
CAD plug-ins			
	4CAD functionality	Interface to 4CAD-Plugins PointCab 4Revit or PointCab 4BIMm.	○

* is included in the „Vectorizer“ module

● = included in the software

○ = not included in the software, but can be purchased in our [SHOP](#).

Supported hardware and data format

PointCab processes data from all terrestrial laser scanners, mobile mapping systems, hand-held scanners and drones.

The exported results are compatible with all common CAD systems.

Supported laser scanners / point clouds	Supported CAD systems
FARO (e.g. FARO Focus 3D) FWS, LSPROJ	Autodesk (AUTOCAD, INVENTOR, REVIT)
LEICA (e.g. Leica ScanStation, Leica HDS) PTG, PTX	Bentley MicroStation
Riegl (e.g. Riegl VZ laser scanner) RSP	Bricsys BricsCAD
TRIMBLE (e.g. Trimble TX5, Trimble TX8)	Dassault Systèmes DraftSight, SolidWorks
Zoller + Fröhlich (e.g. Z+F IMAGER) ZFPRJ	Graphisoft ARCHICAD
Mantis MPC	Trimble SketchUp
GeoSLAM – ZEB1, ZEB-REVO	HKK GEOgraf
AGISOFT & PIX4D	Nemetschek Allplan, Vectorworks
DotProduct (.dp)	Carlson Software
All others with E57/LAS/LAZ/XYZ	CARD/1
	Vis-All 3D
	PC-Crash

Merge all types
of scanner data
in one project.

System requirements

PointCab uses all the available system resources.

The processing speed rises depending on how comprehensive these are.

- Minimum 2 GB RAM
- 1.0 Ghz Intel compatible CPU
- Microsoft Windows 7, 8, 10 – 64 bit
- Minimum 10 GB free hard disk memory

General data about processing (theoretically unlimited):

- Number of reproducible scans: 12,000
- Number of reproducible points: unlimited
- Usable CPUs: unlimited
- Usable RAM: unlimited

Product overview

Basic software

Licensing options

Depending on the company size or type of enterprise, we offer appropriate licensing options:

- Single-workstation licenses
- Upgrade from PointCab Suite to PointCab 3DPro
- Monthly financing
- Academic license for PointCab 3DPro
- Student license for PointCab 3DPro

Supported languages

Our software is available in the following languages:

- English
- French
- German
- Italian
- Spanish
- Russian
- Polish
- Japanese
- Chinese

Our plug-ins for BIM

Two different software plug-ins are available for Building Information Modeling.



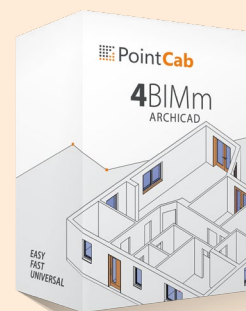
PointCab 4Revit

Navigating and modeling in point clouds is time-consuming and complex.

PointCab 4Revit is a solution that was developed to support efficient and simple 3D model with point clouds and Revit.

Benefit from the well-thought-out functional principle for measurement in orthophotos and in position-based views (scanner panoramas).

Save time by reducing the effort involved in navigating to and finding exact points.



PointCab 4BIMm

The import of point clouds into ARCHICAD is limited to a size of a few hundred million points.

Navigating and modeling in large point clouds in ARCHICAD are also complex.

PointCab 4BIMm is a solution that can also be used to evaluate very large point cloud projects efficiently and to create BIM building models.