

Leica Zeno GIS series

An Easy Mobile GIS solution



Your Vision: Easy-to-use Mobile GIS

Welcome to Leica Zeno GIS It doesn't get any Simpler

With Leica Zeno GIS hardware and software solutions it has never been so easy. Manage and maintain assets, inspect infrastructure, respond to emergencies and conduct as-built and incident mapping with ease.

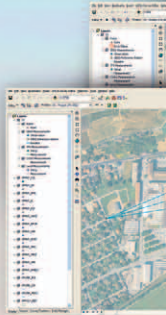
4

EasyIn – One-click Automated workflow



Leica Zeno Office incorporates a unique EasyIn workflow that simultaneously checks-in features and GNSS raw-data, automatically post-processes and updates feature vertices in one easy step.

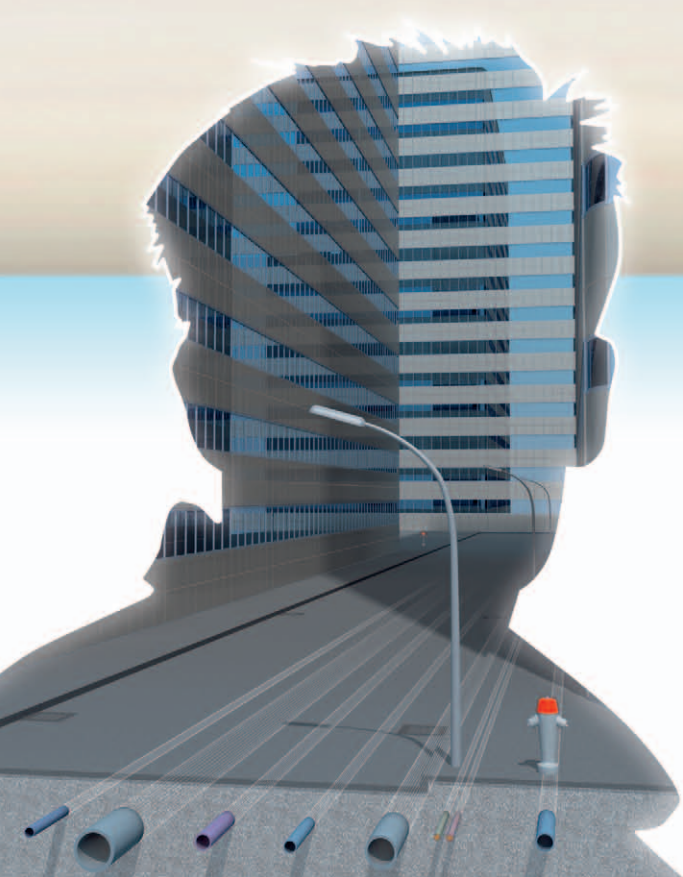
Your benefit – with minimal know-how easily synchronize your GIS with data you can trust from one or many field users.



3

Collect – With Mobile GIS hardware

Leica Zeno GIS series is designed for use in real-time and post-processing. The software, field mapping hardware and mobile GIS hardware. **Your benefit – select a workflow that meets your accuracy and work environment.**



4 steps to Easy Mobile GIS

1 Maintain – Your enterprise GIS

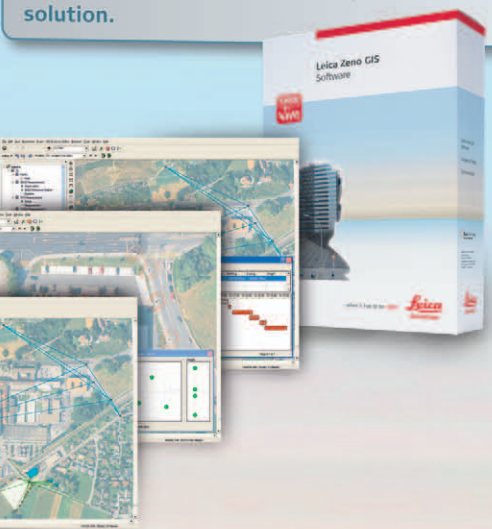


Leica Zeno Office works seamlessly with your enterprise GIS to manage and improve feature quality by providing complete GNSS information.

Your benefit – utilize Zeno GIS together with existing total station and GNSS measurement processes in one integrated solution.

Import/Export survey measurements

- Integrate, manage and process Leica survey measurements (TPS and GNSS) in a GIS database
- Automatically generated features from feature codes




2 EasyOut – One-click Automated workflow



Leica Zeno GIS includes a unique EasyOut workflow to deploy feature and accuracy information to one or multiple devices.

Your benefit – automatically deploy your mobile workforce with rich feature data to ensure only inaccurate features are updated.

Versatile hardware



Designed for high-accuracy mapping processing. With familiar ArcPad OEM has never been so easy.

Mobile GIS device to suit budget & available free in the most demanding



... let us inspire you



Whether you want to map the location of a power pole, the run of a pipeline, the area of a building or a farm; whether you are downtown or out in the country; whether you want to collect new features, or update and maintain the data from your Enterprise or Geographic Information System: For collecting, verifying and updating geographic data or an as-built of civil infrastructure models, Leica Geosystems offers the right solution – with seamless data exchange between field and office, for GIS or CAD workflow.

When the data really counts, Leica Geosystems offers the right combination of hardware and software: Field-proven sensors use up-to-date technologies including terrestrial and satellite data collection and navigation, distance measurement devices, scanners and airborne sensors. Our wide range of software solutions for field and office usage is compatible, scalable and flexible, with the accuracy and reliability that you need.

When it has to be right.



Illustrations, descriptions and technical data are not binding. All rights reserved.
 Printed in Switzerland – Copyright Leica Geosystems AG, Heerbrugg, Switzerland, 2009.
 774208en – 12.13 – galledia



Total Quality Management – our commitment to total customer satisfaction.

ArcPad™ is a registered trademark of Environmental System Research Institute Inc. Redlands, USA.

ESRI word mark is owned by ESRI Inc, USA.

Other trademarks and trade names are those of their respective owners.



Leica Zeno GNSS/GIS Handhelds Datasheet



Leica Zeno Software Datasheet



Leica Zeno GG03 Datasheet



Leica CS25 GNSS Datasheet



Leica MobileMatrix Brochure